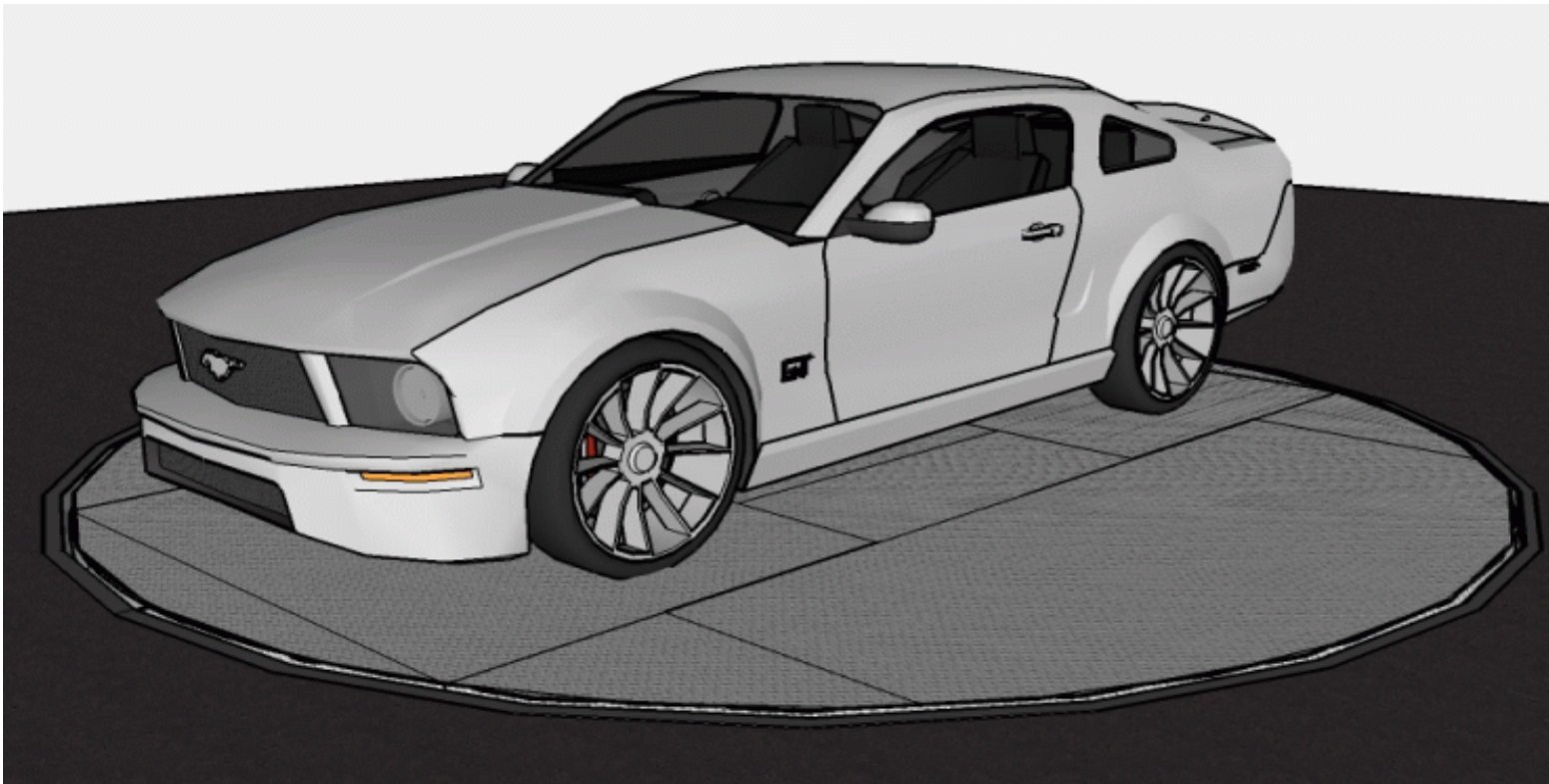
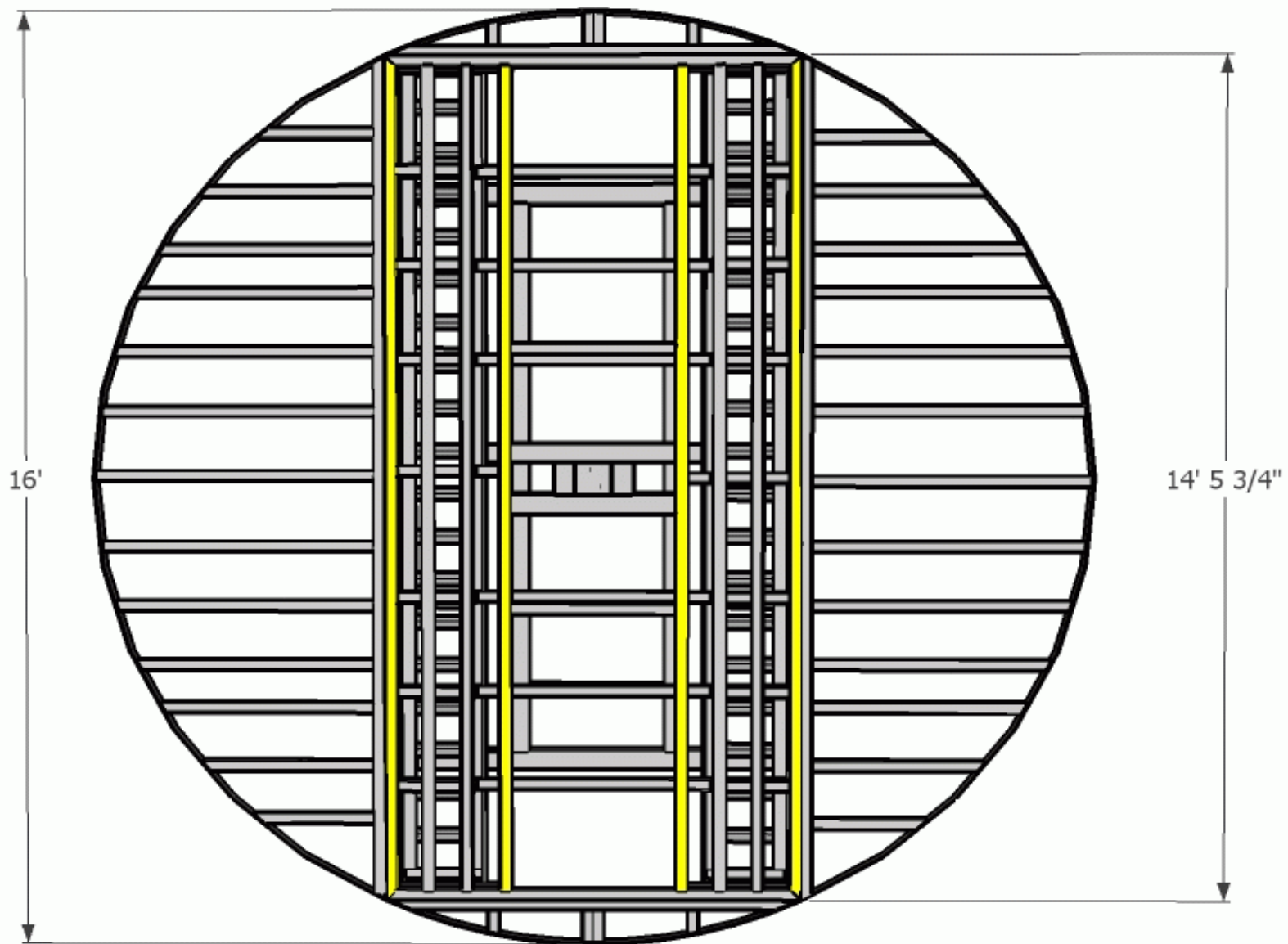


Flushmount Vehicle Turntable

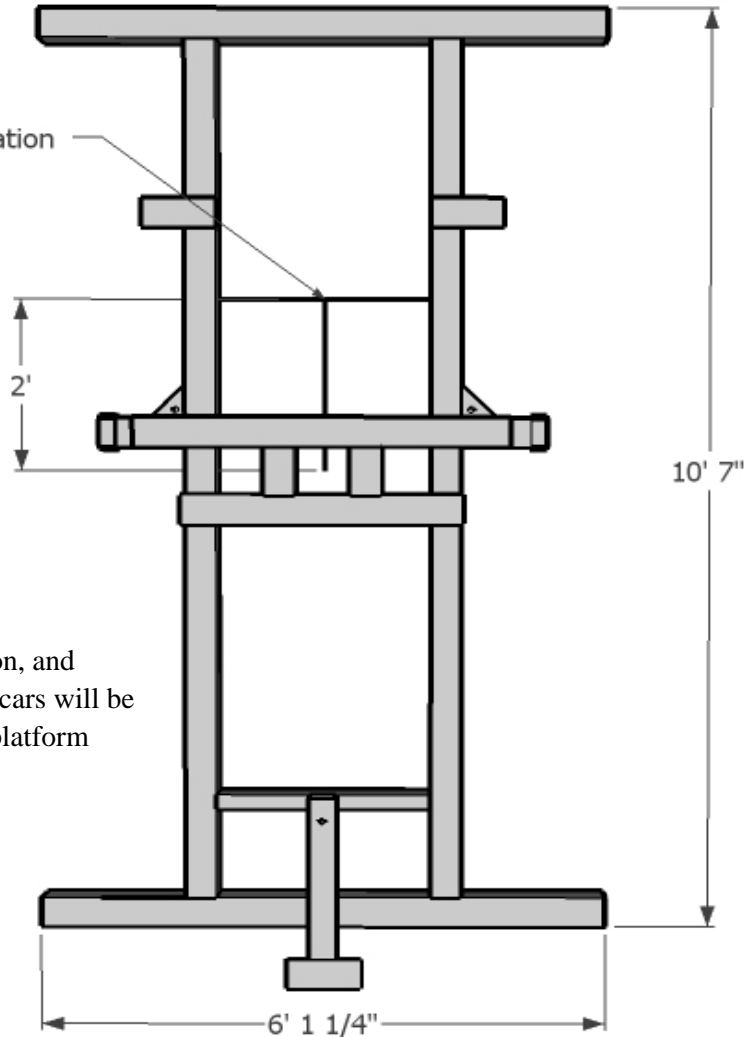




The 16' Deluxe Vehicle Turntable includes a load/display platform with an 80 inch width and a little over a 14.5 foot length. The drive-on runway are highlighted in yellow.



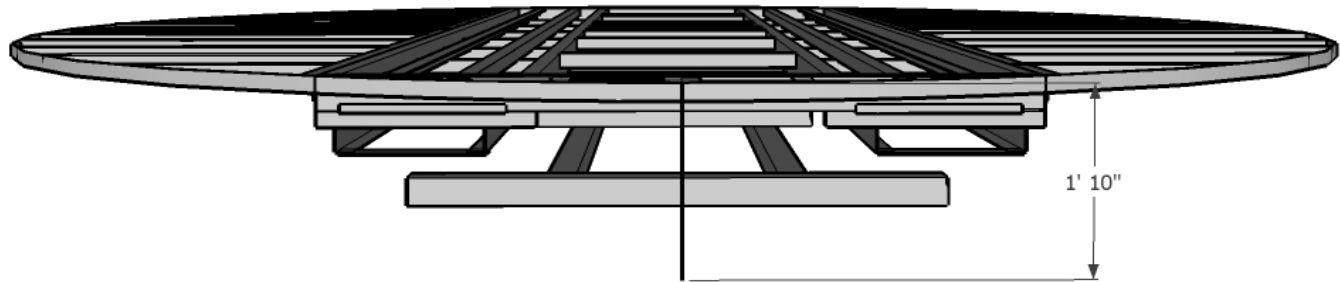
Electrical Stub Location

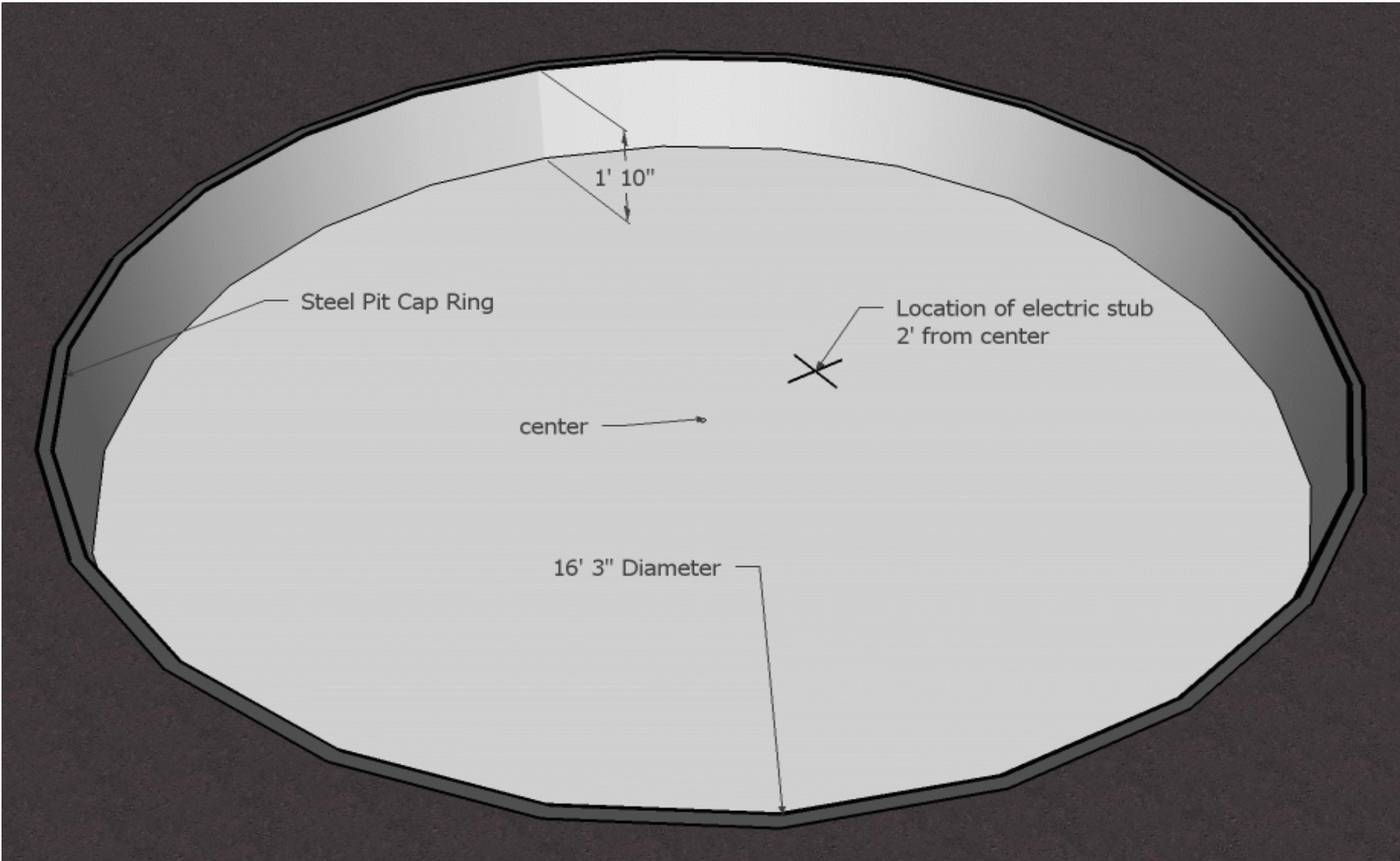


Load direction, and specific side cars will be driven onto platform

Standard turntable base is 127 inches long and 73-1/4 inches wide. The electrical stubbing is to be placed approximately 2 feet from the pit center in the opposite direction that the casino intends to load the vehicle on and off the platform.

Standard turntable height is 22" prior to the top covering installation





The standard required concrete pit dimensions for a 16 foot Flushmount Vehicle Turntable are: 22 Inches Deep with an 16 Foot 3 Inch Diameter. There will an 1-1/2 inch gap between the turntable and concret pit wall.

My Auto Displays will fabricate and and freight a 3 piece "pit cap" ring to the foundation contractor prior to forming of pit. The pit cap is 2x3x3/16" rolled angle steel The inclusion of this cap will reduce the open gap by 3/8 inches. Pit cap ca be painted any color to best match the surrounding flooring.

